



Migrating the eG Manager

eG Innovations Product Documentation

www.eginnovations.com



Restricted Rights Legend

The information contained in this document is confidential and subject to change without notice. No part of this document may be reproduced or disclosed to others without the prior permission of eG Innovations Inc. eG Innovations Inc. makes no warranty of any kind with regard to the software and documentation, including, but not limited to, the implied warranties of merchantability and fitness for a particular purpose.

Trademarks

Microsoft Windows, Windows 2008, Windows 7, Windows 8, Windows 10, Windows 2012 and Windows 2016 are either registered trademarks or trademarks of Microsoft Corporation in United States and/or other countries.

The names of actual companies and products mentioned herein may be the trademarks of their respective owners.

Copyright

©2018 eG Innovations Inc. All rights reserved.

Chapter 1: How to Migrate the eG Manager?

The procedure for migrating the eG manager from one server to another differs according to the IP address configured for the new manager server - i.e., based on whether the new manager server is configured with the same IP as the old server or a different IP.

This document discusses both these procedures.

Note:

The procedures detailed in this document apply only when an eG manager on a Windows host is to be migrated to another Windows host.

1.1 Migrating the eG Manager to a Server with the Same IP Address as the Original Server

Before attempting the migration, make sure that the new server has the same or higher configuration as the old server.

Then, follow the steps below to perform the migration:

1. In the new server, install a new manager and agent. When doing so, ensure the following:
 - The eG manager and agent should be installed in the same directory in which they were installed in the original server.
 - The old and new servers should be installed with the same version of the eG manager and agent.
2. Copy the following files/folders from the old manager to the newly installed manager:
 - <EG_MANAGER_INSTALL_DIR>\lib\eg_manager.jar
 - <EG_MANAGER_INSTALL_DIR>\lib\setEnv.bat
 - <EG_MANAGER_INSTALL_DIR>\manager\config folder
 - <EG_MANAGER_INSTALL_DIR>\manager\tomcat\webapps\final folder
3. Copy the license file into the <EG_MANAGER_INSTALL_DIR>\bin folder in the new eG manager server.

4. Open the command prompt on the new manager server and then run the **<EG_MANAGER_INSTALL_DIR>\lib\mgrdebugoff.bat**, as *administrator*.
5. Finally, start the eG manager.

1.2 Migrating the eG Manager to a Server with a Different IP Address From the Original Server

For this, follow the steps below:

1. In the new server, install a new manager and agent. When doing so, ensure the following:
 - The eG manager and agent should be installed in the same directory in which they were installed in the original server.
 - The old and new servers should be installed with the same version of the eG manager and agent.
2. Copy the following files/folders from the old manager to the newly installed manager:
 - **<EG_MANAGER_INSTALL_DIR>\lib\eg_manager.jar**
 - **<EG_MANAGER_INSTALL_DIR>\lib\setEnv.bat**
 - **<EG_MANAGER_INSTALL_DIR>\manager\config** folder
 - **<EG_MANAGER_INSTALL_DIR>\manager\tomcat\webapps\final** folder
3. Run **changeManagerSettings.bat** on the new manager server by following the steps below:
 - Open the command prompt on the new manager server, as *administrator*.
 - Switch to the **<EG_MANAGER_INSTALL_DIR>\lib** directory.
 - Run the command **changeManagerSettings.bat**.
 - When prompted for the manager IP, provide the IP address of the new server.
 - Copy the license file into the **<EG_MANAGER_INSTALL_DIR>\bin** folder in the new manager.
 - Open the command prompt as administrator and then run the **<EG_MANAGER_INSTALL_DIR>\lib\mgrdebugoff.bat**.
4. Start the new eG manager
5. Stop the old eG manager.
6. Next, login to the admin interface of the new eG manager.

7. Follow the Infrastructure -> Components -> Add/Modify menu sequence.
8. From the page that appears next, pick any managed Component type, and click the Edit icon alongside any of the components of that type. Finally, click the Update button in the page that then appears. Doing so will map the eG external agent to the new eG manager.
9. Next, using the eG admin interface, change the Host IP/Name of those components that have been managed using the older IP address.
10. Finally, redirect all the other agents to the new manager, one after another. For this, follow the steps below, on every system that is hosting an eG agent:
 - Login to the system hosting an eG agent.
 - Open the command prompt on the agent host, as *administrator*.
 - Switch to the <EG_INSTALL_DIR>\lib directory.
 - Run the command, **changeAgentSettings.bat**.
 - When prompted for the manager's IP address, provide the IP address of the new server.
 - Run **debugoff.bat** as administrator.
 - If the eG agent was originally running in a user account, then, make sure that you reconfigure the eG agent to run using the same user account (see Figure 1).

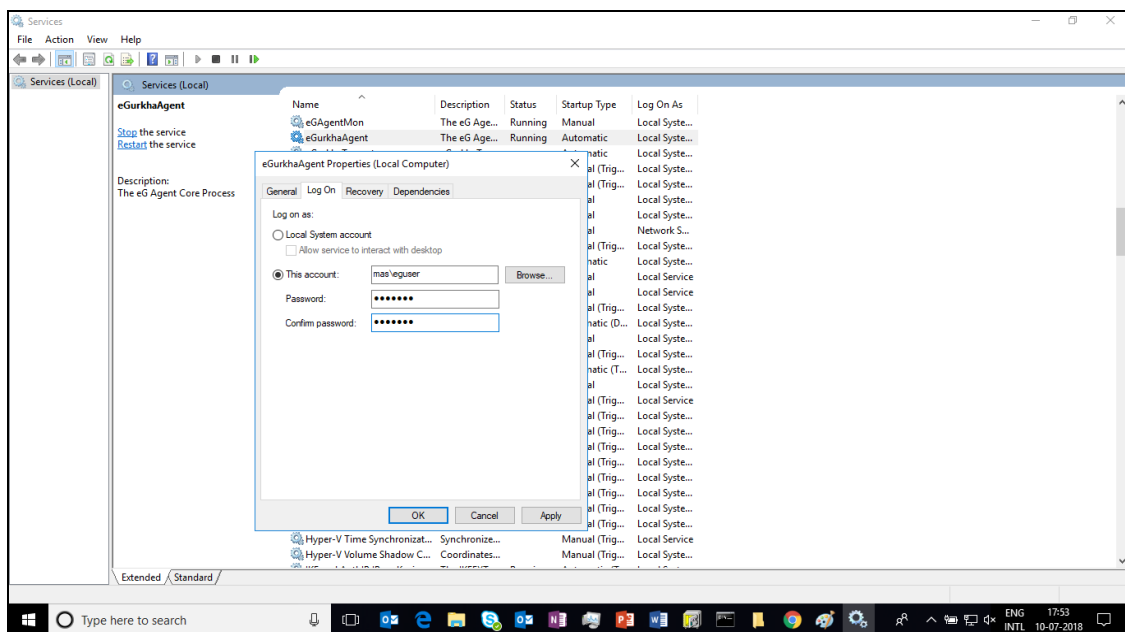


Figure 1.1: Configuring the eG agent to run using a user account

11. Finally, start the eG agent.